



* All images in this datasheet are for illustrative purposes only and may differ from the actual product.
 ** Stand accessories differ by models, and need to be purchased separately.

LG LED All-in-One LAPA Series

All-in-One Direct View LED Display



All-in-One LED Screen



Built-in Speaker



Dedicated Accessories



Easy Installation Quick Maintenance

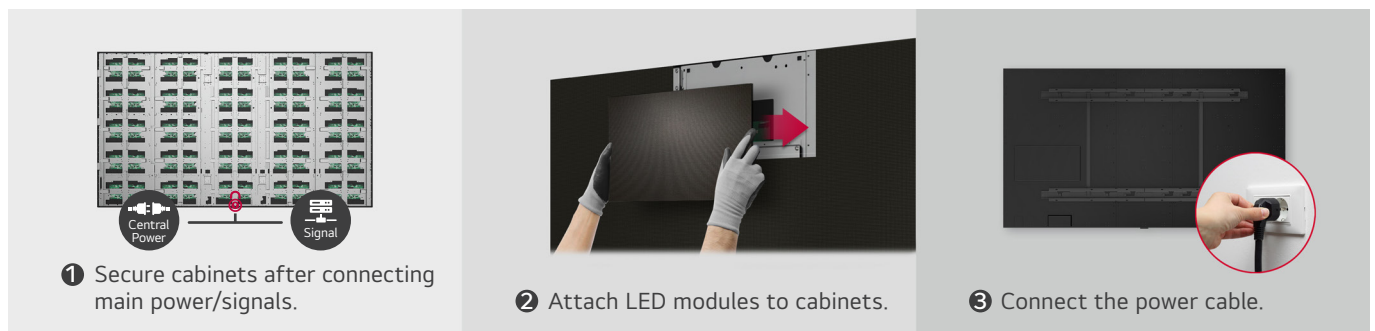
LAPA

Inch	136"
Pixel Pitch	1.56 mm
Brightness	500 nits (Max., after calibration)
Screen Resolution	1,920 × 1,080
Service access	Front
Speaker	Built-in
Controller	Embedded (webOS)



All-in-One LED Screen with Built-in Speaker

Experience the convenience of LG's LED All-in-One LAPA series, featuring stunning 136-inch screen. This all-in-one package includes an embedded controller and built-in speaker, making setup a breeze. Dispelling the notion that LED displays are difficult and complex to install, it requires no controller connections or module configuration.



* The image is illustrated as an example of LAPA136 model.

Easy Installation

The installation process for the LED All-in-One is straightforward. First, secure the cabinets (three for the LAPA136). Next, attach each LED display module to the cabinets, and finally, plug in the power cable. This simple installation saves time and labor, allowing users to easily manage the LED screen.



Simple Power Connection

The LAPA series operates with standard AC cables, simplifying power connections and ensuring a clean, tidy installation.



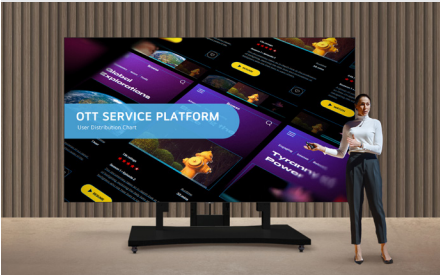
Quick Maintenance

In case of a failure related to the LED module or the system board, it can be serviced from the front. The LED module can be detached using the provided magnetic tool and replaced quickly without cabling.

Landscape Wall Mount



Dedicated Stand



Multi-screen Setup



Versatile Installation Accessories

The product comes with all the necessary components including the landscape wall mount and tools for installation. For added convenience, a dedicated stand is available as an option, allowing you to easily position the screen based on your installation needs. Additionally, the LAPA series can be seamlessly arranged side by side in a 1 x N configuration, accommodating up to 10 screens to suit your specific installation site and purpose.

* Stand accessories vary by model and must be purchased separately at an additional cost.



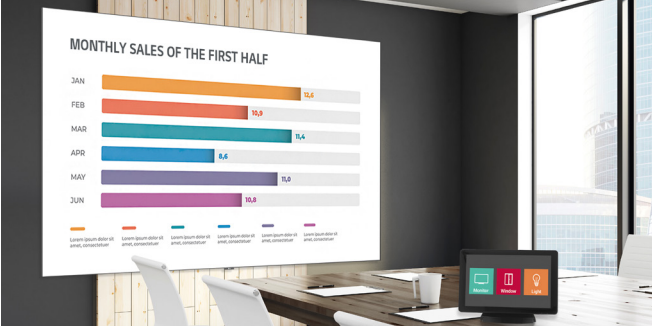
Real-time LG ConnectedCare

Maintenance is easy and fast with the optional LG ConnectedCare service, a cloud service solution provided by LG. It remotely manages the status of displays in client workplaces for fault diagnosis and remote-control services, assisting in the stable operation of clients' businesses.



High Performance SoC with webOS

The built-in Quad Core System on Chip (SoC) architecture can execute several tasks at once while providing smooth content playback without the need for a media player. Also, LG webOS smart signage platform offers an intuitive user interface and simple app development tools. The webOS Signage Developer site (<https://webossignage.developer.lge.com>) provides SDK tools and documentation for creating apps on LG Digital Signage. This is only open to partners.



Compatible with AV Control Systems

The LAPA series supports Crestron Connected®* for high compatibility with professional AV controls to achieve virtually seamless integration and automated network-based control, boosting business management efficiency.

* Crestron Connected® needs to be purchased separately at an additional cost.



Office Meeting Mode

With Office Meeting Mode, easily configure meeting room details to be displayed such as local time, meeting room number/name and other. It also includes convenient features like automatic input switching, presentation timer, and adjustable settings such as auto-brightness and picture mode.



Wireless Screen Sharing

The LAPA series is compatible with LG One:Quick Share*, a wireless screen sharing solution. This USB accessory allows you to easily share your personal PC screen to a display with just a button press and its built-in Wi-Fi. It also enables you to adjust basic settings of the connected display, such as volume, picture mode, and auto-brightness, without the need for a remote control.

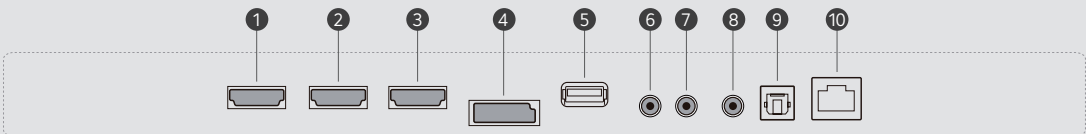
* LG One:Quick Share needs to be purchased separately.



Flame Spread Protection

The LAPA series has satisfied the standards for the BS476 Part7 Class 1 rating, confirming its compliance with flame spread standards.

CONNECTIVITY



- 1 HDMI 1
- 2 HDMI 2
- 3 HDMI 3
- 4 DP
- 5 USB 2.0
- 6 RS-232C IN
- 7 RS-232C OUT
- 8 IR & LIGHT SENSOR
- 9 OPTICAL DIGITAL AUDIO OUT
- 10 LAN

SPECIFICATIONS

LAPA136-GF

Physical Parameters	Pitch Name	P1.56
	Pixel Configuration	Single SMD
	Pixel Pitch (mm)	1.56
	Module Resolution (W × H)	192 × 108
	Module Dimensions (W × H)	11.8 x 6.6 in. / 300 × 168.75 mm
	No. of Modules per Screen (W × H)	10 × 10 (Total 100)
	Screen Resolution (W × H)	1,920 × 1,080
	Screen Dimensions (W × H × D)	118.3 x 54.8 x 2.3 in. / 3,005 × 1,692.5 × 59.5 mm
	Screen Surface Area	54.5 ft ² / 5.06 m ²
	Screen Weight	239.2 lbs. / 108.5 kg
	Physical Pixel Density (pixels/m ²)	409,600
	Flatness of Cabinet (mm)	±0.15
	Cabinet Material	Aluminum
	Service Access	Front
Optical Specifications	Typical Brightness After Calibration (nits)	Up to 500
	Color Temperature (K)	3,200-9,300
	Visual Viewing Angle (H × V)	150° × 150°
	Brightness Uniformity	98%
	Color Uniformity	±0.015 Cx, Cy
	Contrast Ratio	3,000:1
	Processing Depth (bit)	16 (HDR10, HDR10 Pro)
Electrical Specifications	Max Power Consumption (W)	1,300
	Avg. Power Consumption (W)	650
	Max Power Consumption (W/m ²)	260
	Max Heat Dissipation (BTU/h)	4,436
	Avg. Heat Dissipation (BTU/h)	2,218
	Max Heat Dissipation (BTU/h/m ²)	888
	Power Supply (Vac)	100 to 240
	Frame Rate (Hz)	50 / 60
	Refresh Rate (Hz)	3,840
Operation Specifications	Lifetime - Half Brightness (hours)	Up to 100,000
	Operating Temperature	32°F to 104°F / 0°C to +40°C
	Operating Humidity	10-90% RH
	IP Rating (Front / Rear)	IP30 / IP30
Regulatory & Certifications	Certifications	CE, FCC, EMC Class A
	Fire Protection	BS476 Part7 Class 1
	Environmental	RoHS, REACH
Warranty & Other	Warranty	3 Year Limited
	Speaker	Built-in (9 W + 9 W)
	Controller	Embedded (webOS)
	Connectivity	HDMI (x3) with HDCP 2.2, DisplayPort with HDCP 2.2, USB, LAN, RS-232C In/Out, IR, Digital Audio Out (SPDIF Optical)
	Wi-Fi / Bluetooth	Yes / No
	Accessories	IR Remote (In-box)

Lifetime spec does not supersede the Limited 3 Year Warranty.

* Specifications are subject to change without notice. Please make sure to check the product manual for details about product usage.